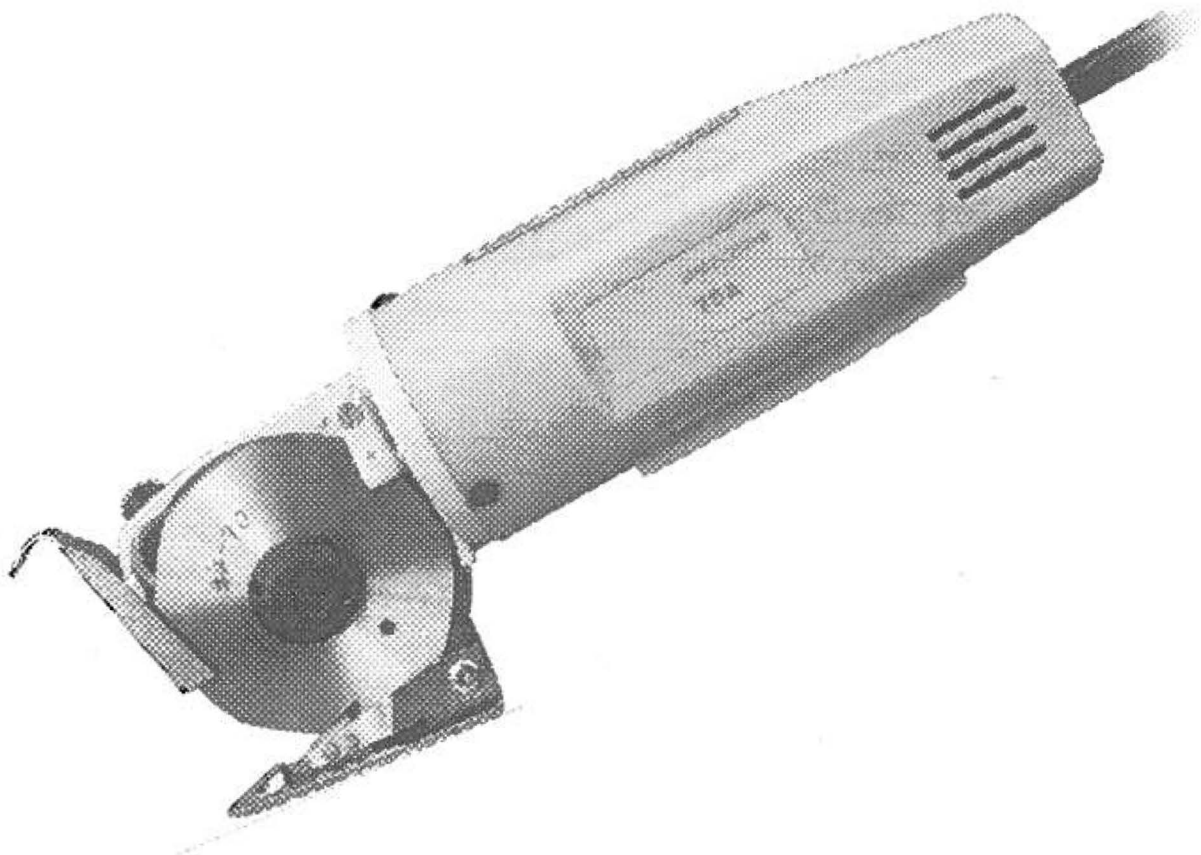


ROUND KNIFE CUTTER

ROUND KNIFE CUTTER



YJ-70A Manual

Direction

70 Type electric scissors is suitable for clothes, shoes and hats ties, umbrella enterprise. It can cut off quickly and is portable and flexible. This machine has reasonable structure and all the necessary function.

Technical Specification:

Blade Size: ϕ 70 mm
 Blade speed: 2400 cycles
 Pruning height: 25 mm
 Voltage: single-phase 100V~120V; 220V~240V
 Power: 170 w

Common usage and assembling

1. Mill blade: start electric scissors, press abrasive stick (B3) the abrasive wheel (B7) will Mill the blades automatically, to keep the blade sharp. If the abrasive wheel has more greasy dirt, should use it after cleaning or changing.
2. Blade load and unload: The blade is revolved to abrasive wheel hole, insert cylindrical pin to use flatt hand (appendix) to revolve out or compress blade hat (B22).
3. Change other parts according to the order of three - dimensional assembly drawing.

Maintenance point

1. The abrasive wheel (B7) has more greasy dirt, it should be cleaned and changed in time to make sure of milling blade effectively and keep the blade sharp, reduce the shoulder of the electric machine.
2. Clean fine dirt: should clean the fine dirt behind the blade and in the electric machine to avoid damage.
3. Worm wheel lubricate: Normally use electric scissors, the grease in the oil cup (B9) stakes abrasive wheel twice ~three times a month.
4. Blade lubricate: Before using, stakes 30 # oil to lubricative cotton (W28) to reduce the friction between the small blade and below blade.
5. Change the electric brush: After turning for a long time, has damaged a half, should change the electric brush with the power cut off (if the electric motor is operating unnormally, please stop the machine at once to check the electric brush is normal).

The reason of cancelling cloth, blocking cloth and cut down hard and remove

Reason	Remove
below blade (B24) or blade (B21) has breach or damage	change
The position, angle and elasticity Between Blade and below blade	1.adjust blade below 2 Below blade must be leaned against the blade as min angle, suitable elasticity
Over greasy dirt of the abrasive wheel	After getting rid of abrasive wheel greasy dirt, start mill blade.

Make sure to:

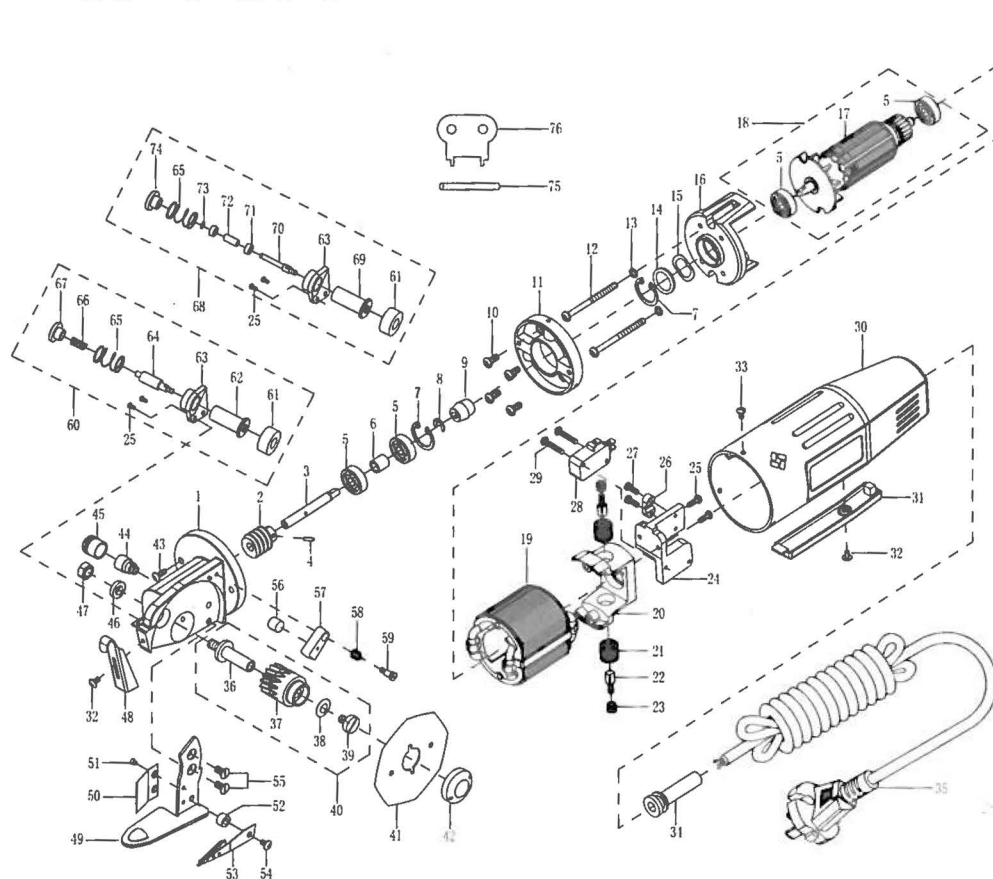
1. Operating voltage must be normal and connect earth wire for safety, to avoid shock.
2. Do not touch the high speed moving blade with fingers or another body organ.
3. When to load and unload parts, the power plug must be pulled down.
4. Forbid to plug the fanlight.

Appendix list

blade	1 pc	cylindrical pin	1	connector	2	lubricative cotton	1
abrasive wheel	1 pc	flatt hand	1	electric brush	1	lubricative grease	1

From the library of: Superior Sewing Machine & Supply LLC

YJ-70A



序号 零件编号及名称
Ref.no. Part.no & Description

- 1 B30机头Gear Housing
- 2 B31蜗杆Drive Gear
- 3 B33蜗杆轴Drive Gear Shaft
- 4 W33 ϕ 2X12开口销Roll Pin
- 5 W5 626轴承Bearing
- 6 B35轴承夹套Collar
- 7 W42 ϕ 19孔用挡圈Collar
- 8 W38 ϕ 6E形轴用挡圈Shaft Ring
- 9 B41十字接Coupling
- 10 W25 M4X8一字半圆头螺丝Standard Screw
- 11 B40连接座Insulator
- 12 B45 M4X48一字半圆头螺丝Standard Screw
- 13 W46 ϕ 4弹垫Washer
- 14 W43垫片Washer
- 15 W44 ϕ 19X0.3波形垫圈Undulated Washer
- 16 B47风叶支架Holder For Motor Cooler
- 17 B50转子Rotor
- 18 B73转子总成Rotor Assembly
- 19 B48定子Stator
- 20 B54电刷支架Base For Carbon Brush
- 21 B63电刷套Socket For Carbon Brush
- 22 W54电刷Carbon Brush
- 23 W55电刷盖Cap For Carbon Brush
- 24 B64开关座Base For Switch
- 25 W19 M3X8一字半圆头螺丝Standard Screw
- 26 B68压线块Cord Press Block
- 27 G10 M3X10开口一字自攻螺丝Standard Screw
- 28 W57开关Switch
- 29 G57 M3X18十字盘头自攻螺丝Standard Screw
- 30 B58外壳Arm
- 31 B59开关跳Switch Button
- 32 W67 M3X4一字半圆头螺丝Standard Screw
- 33 W11 M3X6一字半圆头螺丝Standard Screw
- 34 G65护线橡胶套Rubber Cover
- 35 G66电源线Cord
- 36 B18蜗轮轴Worm Wheel Shaft
- 37 B19蜗轮Worm Wheel
- 38 B74蜗轮螺丝铜垫Brass Washer

序号 零件编号及名称
Ref.no. Part.no & Description

- 39 B20蜗轮轴螺丝Screw
- 40 B79蜗轮总成Worm Wheel Assembly
- 41 B21刀片Blade
- 42 B22刀片帽Blade Nut
- 43 G50 M4X10十字圆头螺丝Standard Screw
- 44 B10油杯底Oil Cup
- 45 B9油杯盖Oil Cup Cover
- 46 B17 ϕ 6平垫Washer
- 47 B16 M6X5.2螺帽Nut
- 48 B2附刀架Safe Guard
- 49 B25压脚Press Foot
- 50 B27分布片Guide Plate
- 51 B26 M2.5X3十字沉头螺丝Standard Screw
- 52 G40下刀隔套Collar
- 53 B24下刀Lower Knife
- 54 G42 M4X8十字圆头螺丝Standard Screw
- 55 G39 M4X8一字沉头螺丝Standard Screw
- 56 W28毡毡Oil Felt
- 57 W27润滑油器Knife Oilier
- 58 W29润滑油器Spring For Oilier
- 59 W30润滑油器Screw For Oilier
- 60 B72砂轮总成Grind Assembly
- 61 B7砂轮Grinding Wheel
- 62 B8砂轮外轴Grind Wheel Shaft
- 63 B6砂轮架Grinding Wheel Base
- 64 B55砂轮内轴Grinder Shaft
- 65 B56砂轮外轴弹簧Spring
- 66 B4砂轮内轴弹簧Spring
- 67 B3砂轮按钮Grind Button
- 68 B77砂轮总成Grind Assembly
- 69 B8-1砂轮外轴Grind Wheel Shaft
- 70 B74砂轮内轴Grinder Shaft
- 71 B75 618-3轴承Bearing
- 72 B76轴承隔套Collar
- 73 B78 ϕ 2E形轴用挡圈Shaft Ring
- 74 B3-1砂轮按钮Grind Button
- 75 B71刀片锁紧销子Pin
- 76 B70刀片锁紧扳手Spanner